

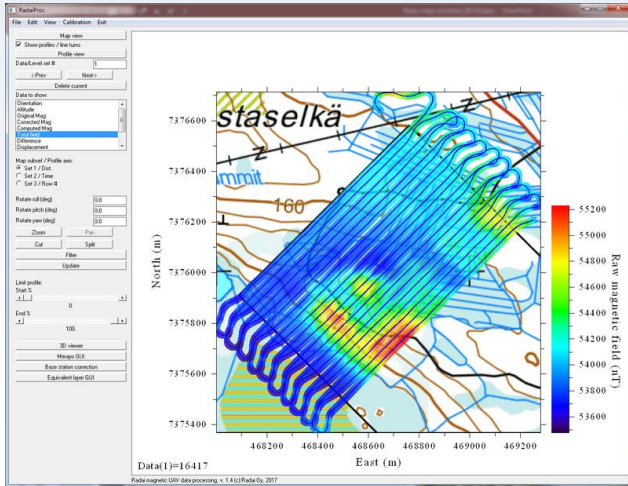
# RadaiPros – magnetic UAV data processing tool

## UAV data processing:

- Flux-gate calibration
- Orientation correction
- Base station correction
- True flight altitude using digital elevation model (DEM)
- Data visualization as maps and profiles and in 3D
- Data editing & filtering

## Equivalent layer modelling (ELM):

- Numerical (least squares) inversion with a single-layer susceptibility model
- Dataset levelling
- Heading corrections
- Compute magnetic field on an even grid at constant altitude
- Remove flight height variations
- Remove spurious events



## NEW! RadaiView

- Viewer application for UAV data
- Quality control tool for partners

## NEW! RadaiPath

- Advanced waypoint generation
- Essential utility tool for partners

## Case study (Pirttijärvi, 2015):

GTK airborne data  $h = 40\text{m}$   
(line spacing  $\Delta \approx 200\text{m}$ )

Radai (ELM) data  $h = 40\text{m}$   
(line spacing  $\Delta \approx 30\text{m}$ )

GTK ground data upward  
continued by 40 m ( $\Delta = 50\text{m}$ )

